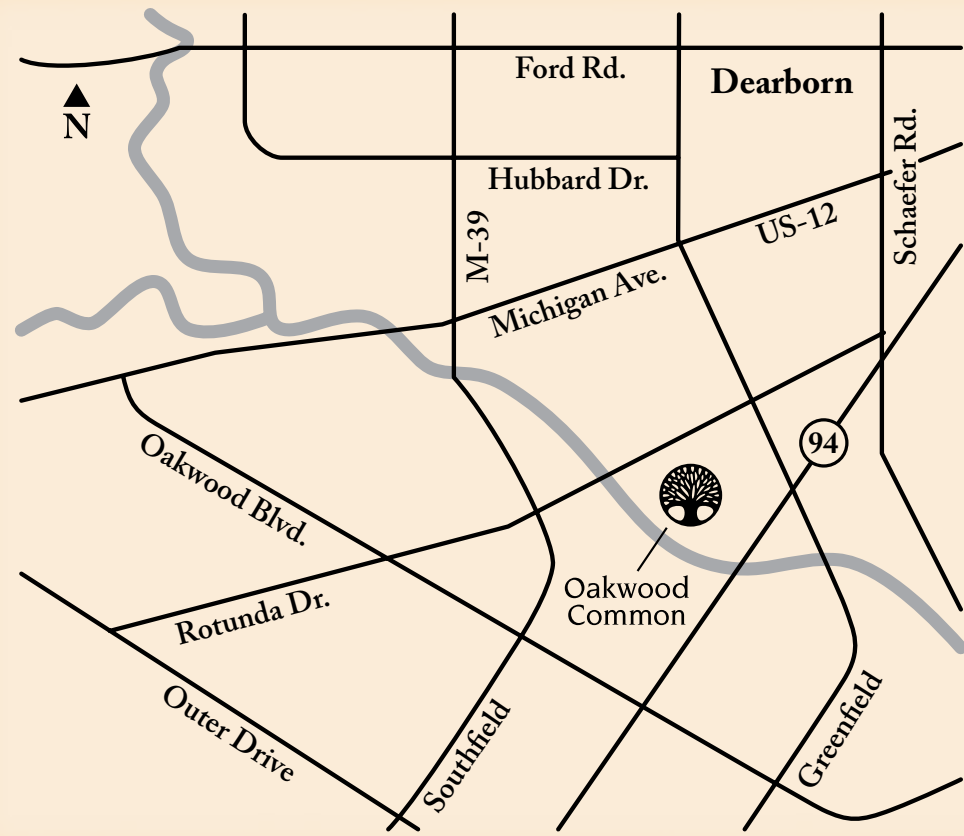


Oakwood Common

Apartment Living



Oakwood Common is conveniently located on Rotunda Drive between Southfield and Greenfield Roads.

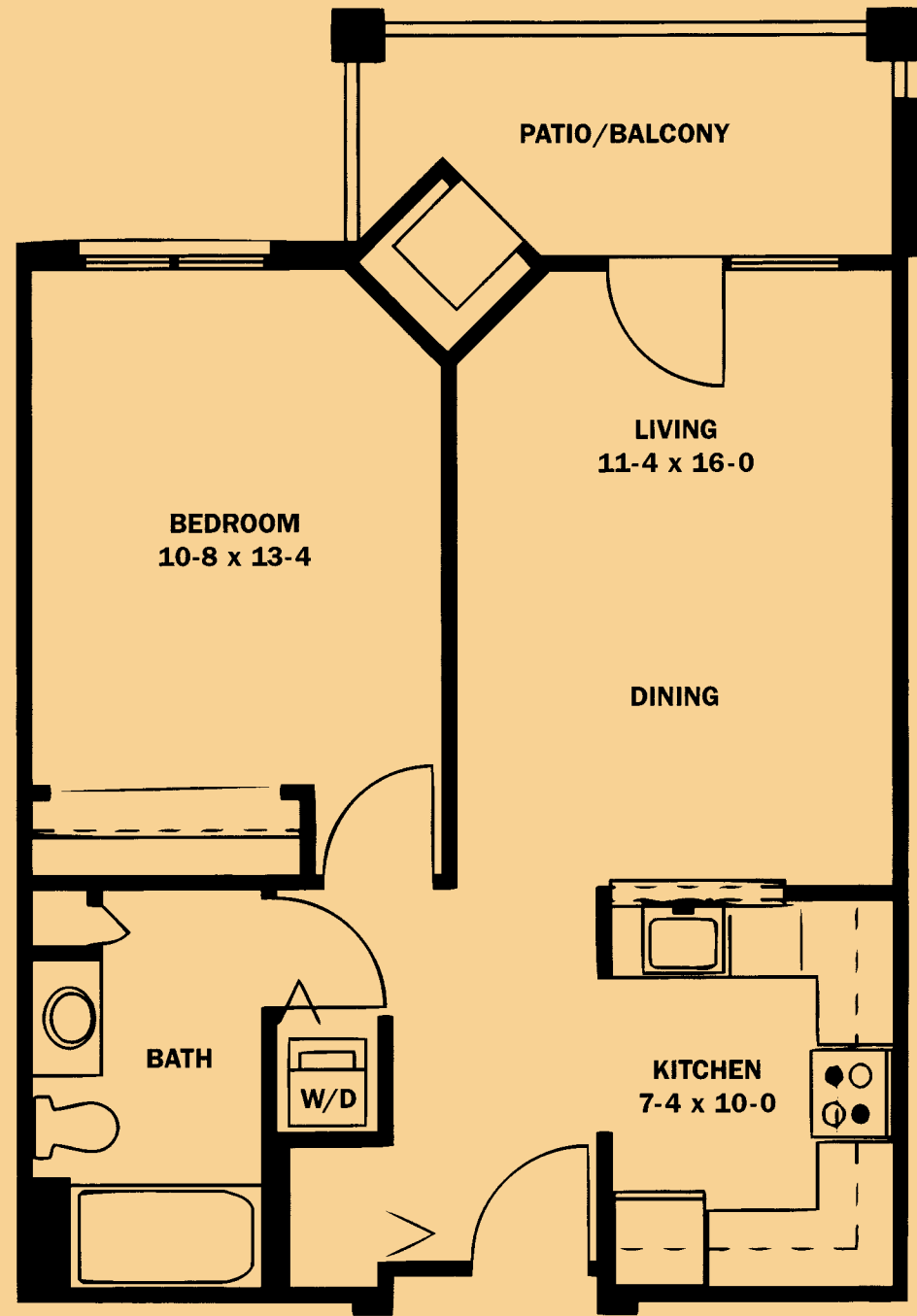
Call 1-800-642-HOME (4663)
or visit www.oakwood.org/oakwoodcommon.



Oakwood Common *Independent Living*

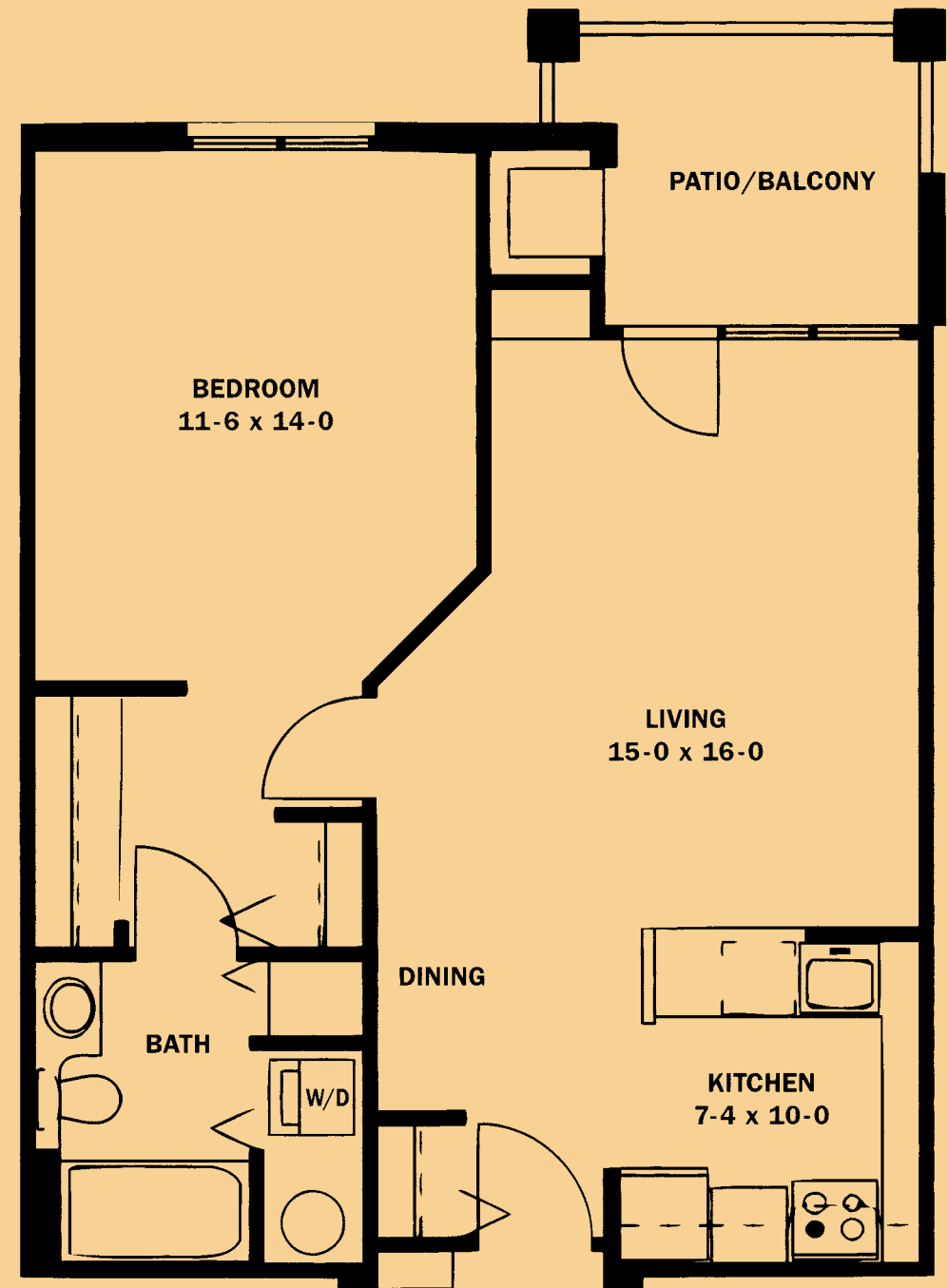
Oakwood Common *Independent Living*

One Bedroom Traditional



600 Square Feet

One Bedroom Deluxe



720 Square Feet

\$ _____ Entry Fee \$ _____ Monthly Fee

\$ _____ Entry Fee \$ _____ Monthly Fee

Oakwood Common *Independent Living*

Oakwood Common *Independent Living*

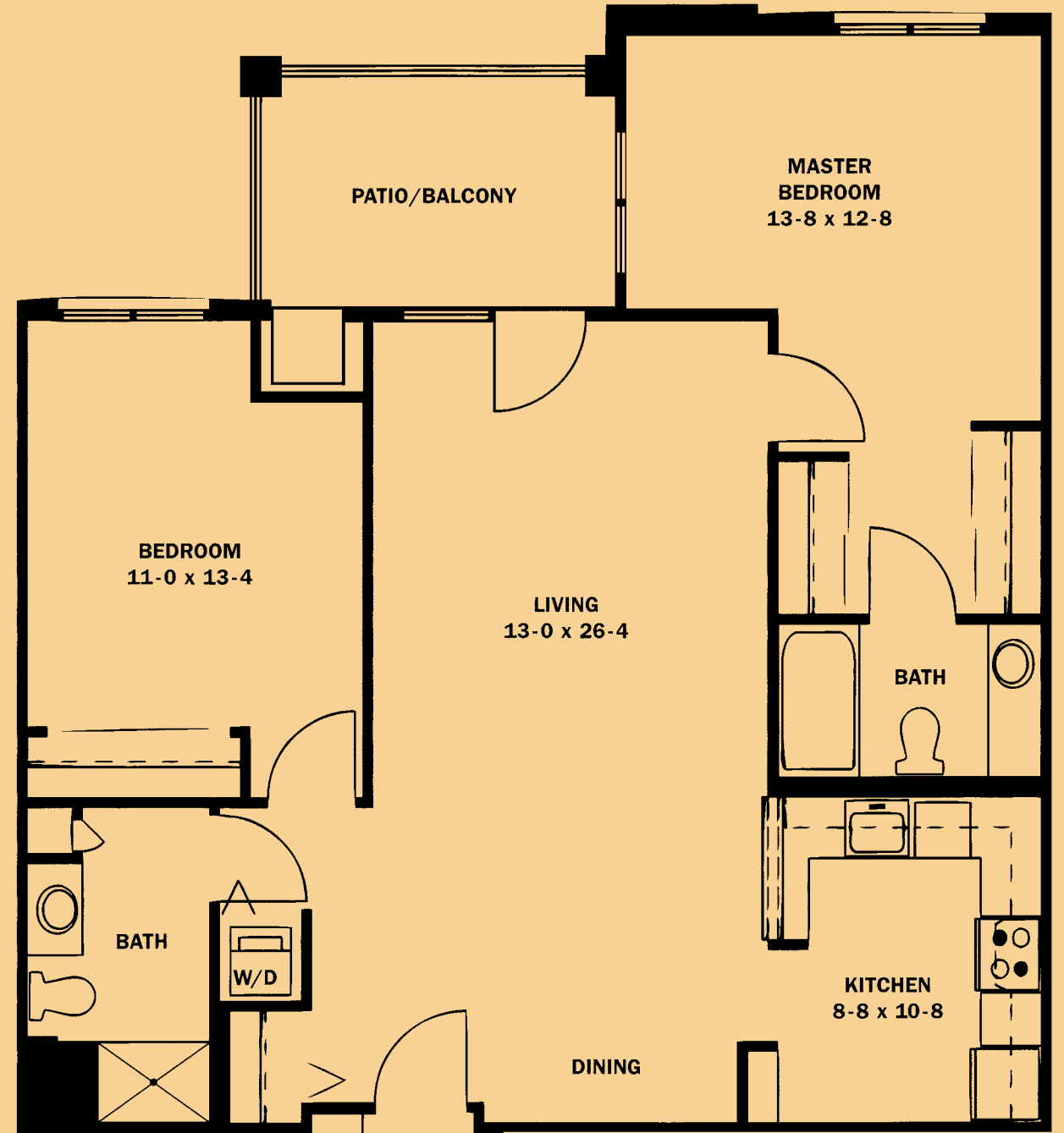
One Bedroom with Den



925 Square Feet

\$ _____ Entry Fee \$ _____ Monthly Fee

Two Bedroom Traditional

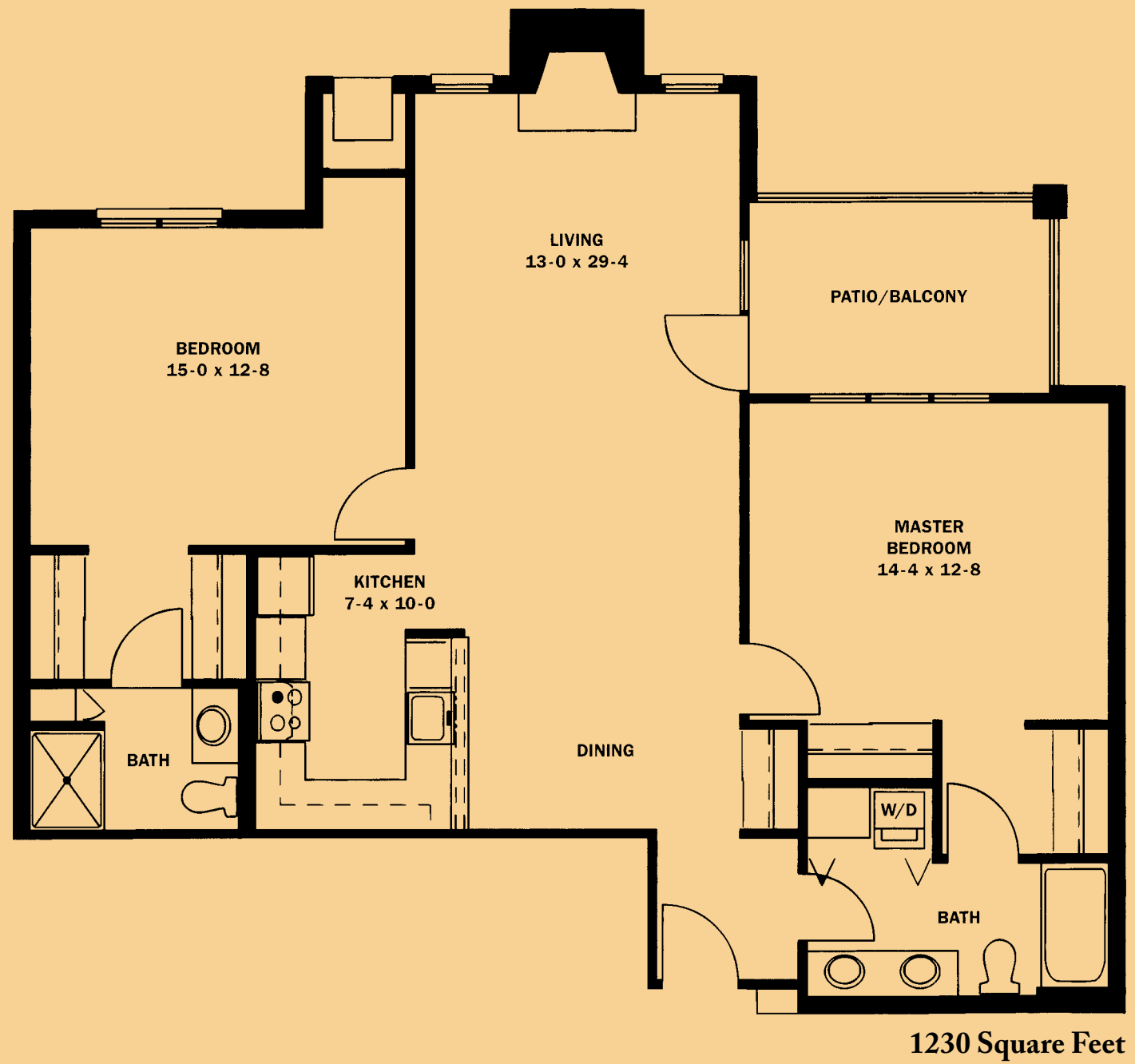


1100 Square Feet

\$ _____ Entry Fee \$ _____ Monthly Fee

Oakwood Common *Independent Living*

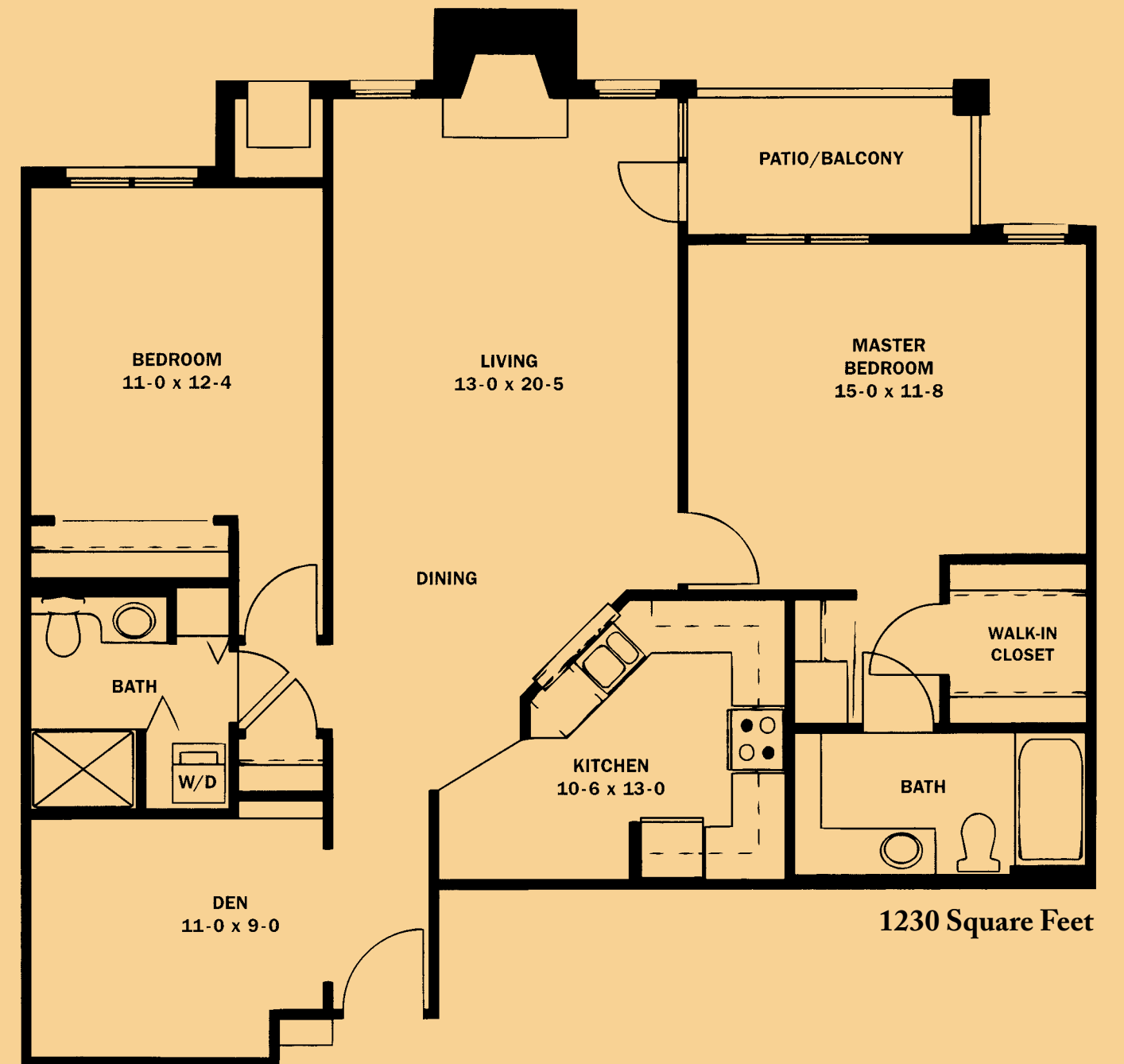
Two Bedroom Deluxe



\$ _____ Entry Fee \$ _____ Monthly Fee

Oakwood Common *Independent Living*

Two Bedroom with Den



\$ _____ Entry Fee \$ _____ Monthly Fee

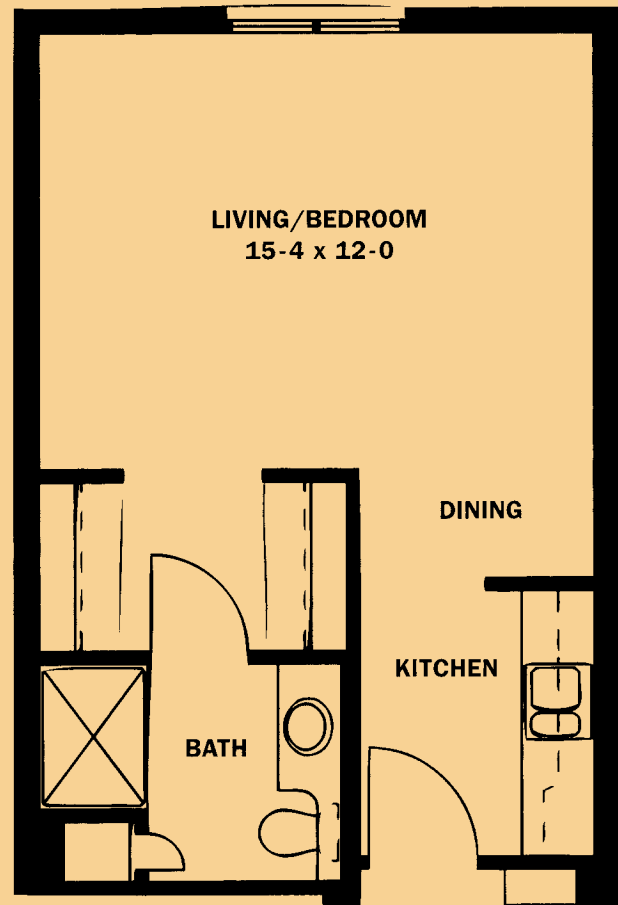
Oak Court *Assisted Living*

Oak Court *Assisted Living*

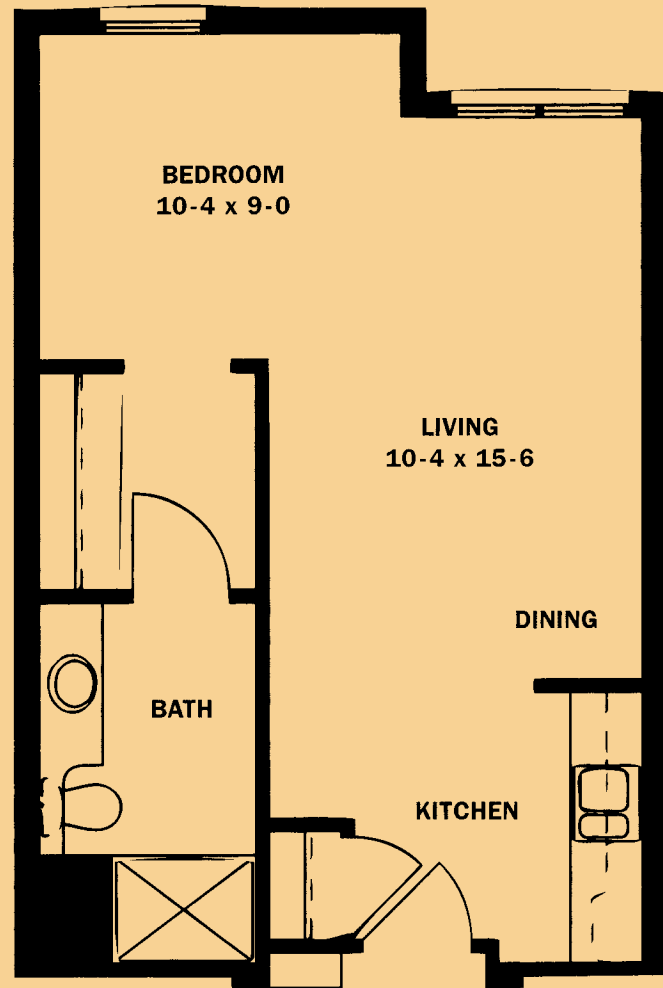
Alcove

Alcove Deluxe

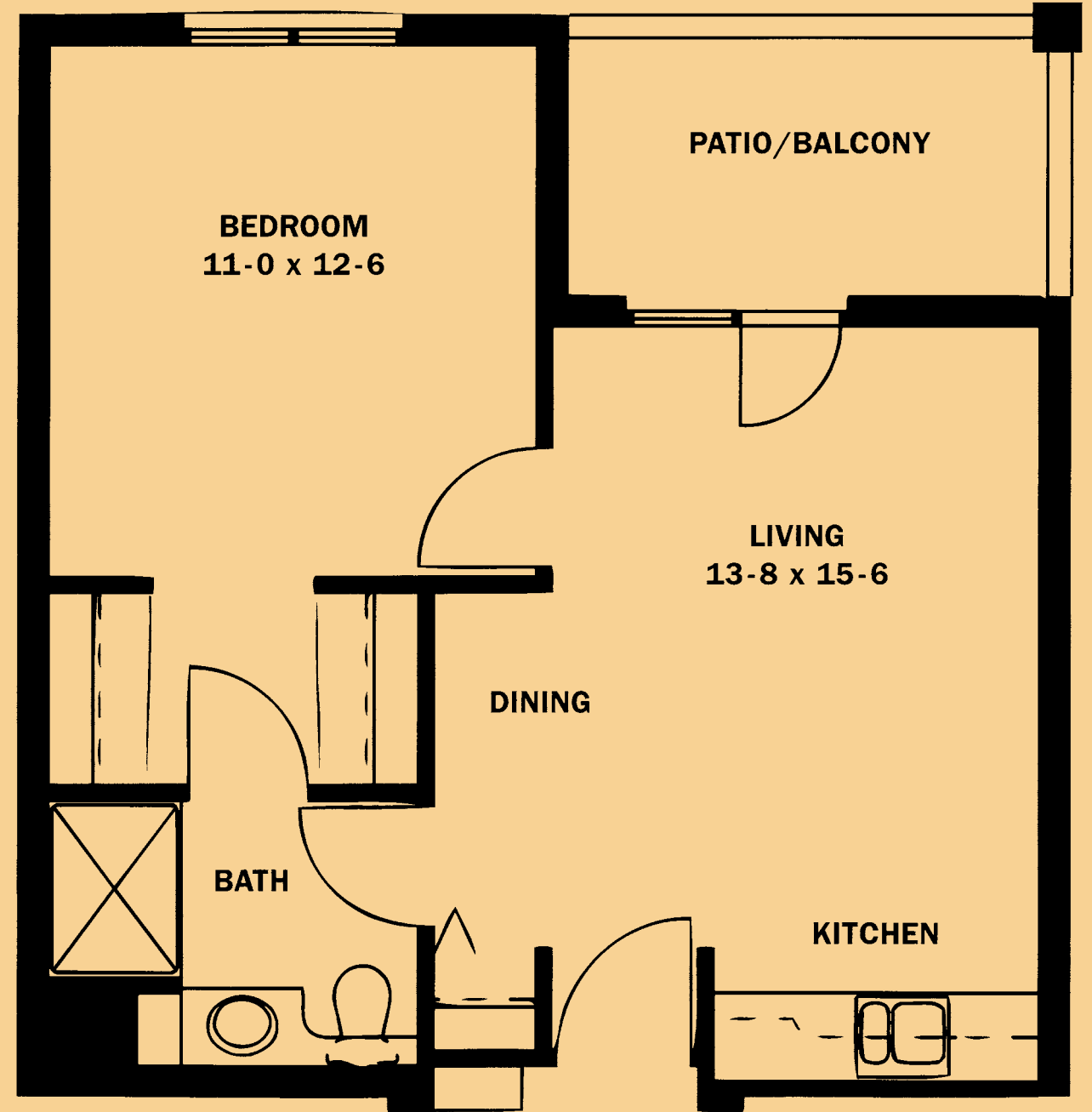
One Bedroom



350 Square Feet



400 Square Feet



450 Square Feet

\$ _____ *Entry Fee*

\$ _____ *Entry Fee*

\$ _____ *Monthly Fee*

\$ _____ *Monthly Fee*

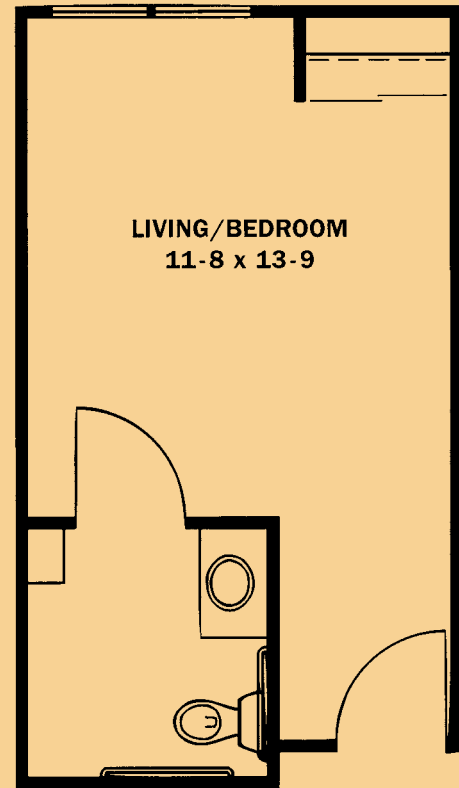
\$ _____ *Entry Fee*

\$ _____ *Monthly Fee*

Oak Court Terrace *Assisted Living*

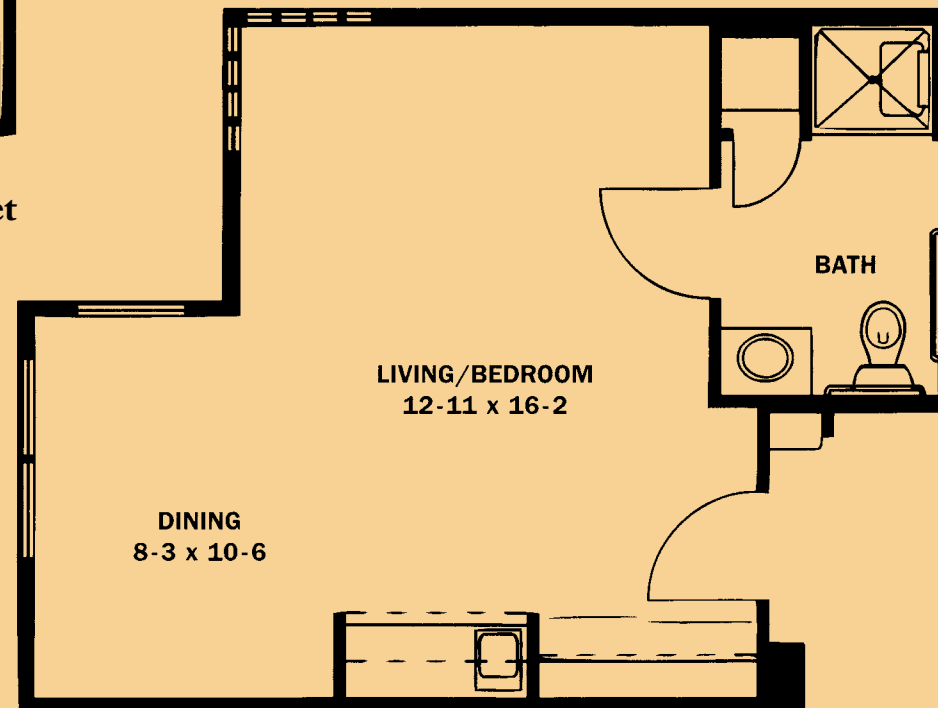
Oak Court Terrace *Assisted Living*

Terrace Alcove



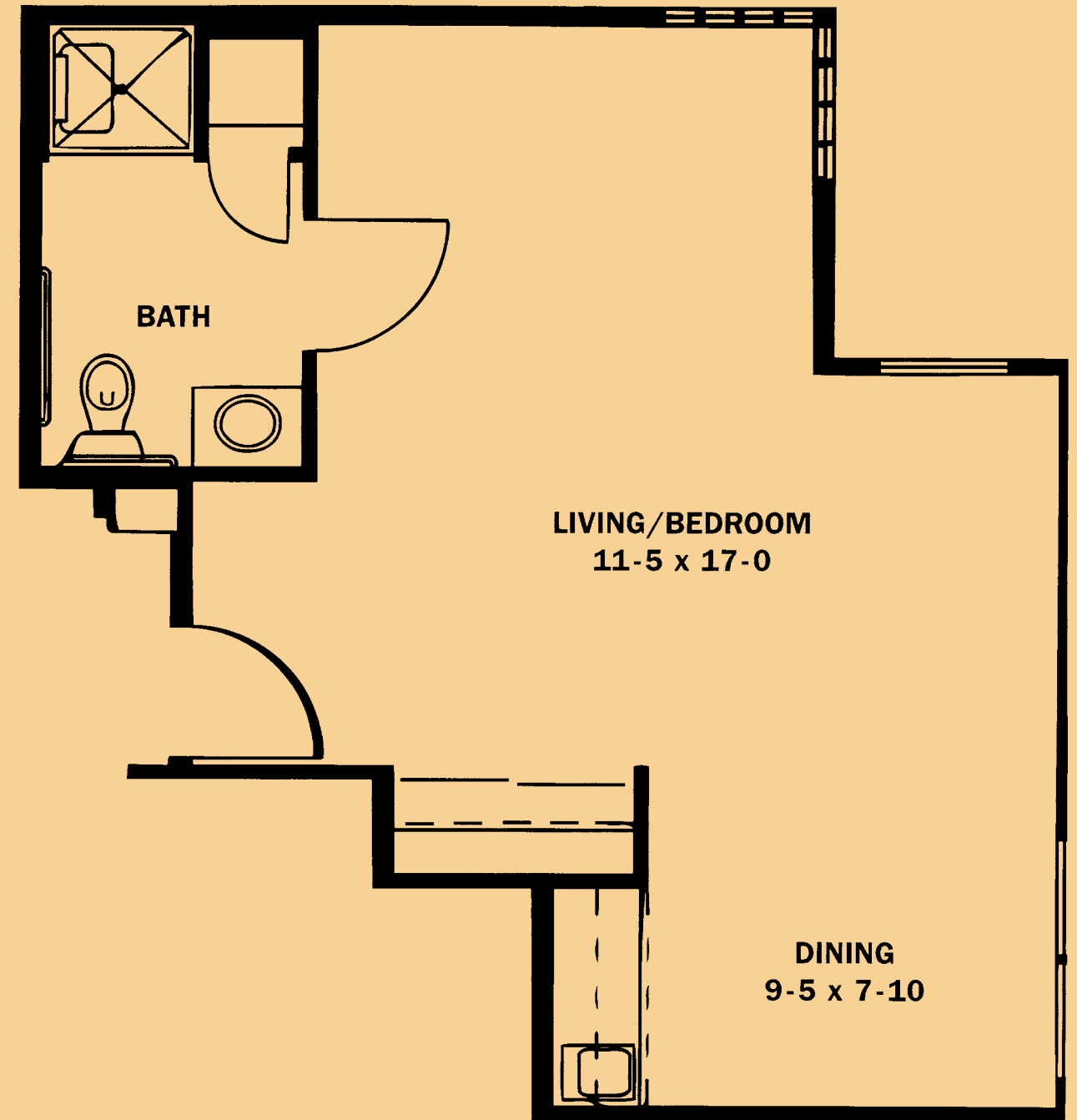
240 Square Feet

Terrace Plus



295 Square Feet

Terrace Deluxe



446 Square Feet

\$ _____ *Entry Fee*

\$ _____ *Entry Fee*

\$ _____ *Monthly Fee*

\$ _____ *Monthly Fee*

\$ _____ *Entry Fee*

\$ _____ *Monthly Fee*